



## Wall Panel

Conwed Panels are reliable, all-purpose acoustic solutions. Capable of multiple levels of durability, highly-customizable finishes, and mounting options, this product is suitable for schools, auditoriums, theaters, offices, and libraries: anywhere noise control is needed.

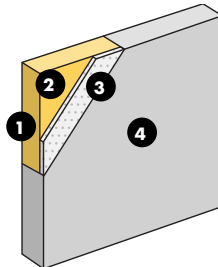
## Fabric | HI ▶ Respond HI

Conwed's fabric-wrapped products, known as the *Respond Series*, are made with the leading textile manufacturers. With the addition of a 1/16" copolymer sheet hidden beneath the fabric, **Fabric | HI products have high-impact resistance.**

### Core construction

Dimensionally-stable 6-7 PCF fiberglass board for acoustic performance. Surface is completely adhered with a custom fabric, wrapping around to the back for fully-finished edges. Layer of 1/16" resilient perforated copolymer for high-impact resistance. Edges hardened for durability using resin.

1. Resin hardened edge
2. Fiberglass core
3. Copolymer
4. Fabric Finish



### Acoustic performance

The NRC of the products are determined from an average of sound absorption coefficients, obtained from tests conducted according to ASTM C423 procedures in an NVLAP accredited laboratory.

HZ →	125	250	500	1000	2000	4000	NRC ↓
9/16" thickness	0.03	0.22	0.54	0.94	1.05	1.04	<b>0.70</b>
1 1/16" thickness	0.11	0.42	0.91	1.13	1.02	0.88	<b>0.85</b>
2 1/16" thickness	0.26	0.87	1.09	1.03	1.01	1.05	<b>1.00</b>
3 1/16" thickness	0.32	0.95	1.09	1.06	1.03	1.00	<b>1.05</b>
4 1/16" thickness	0.36	1.01	1.06	1.05	1.01	0.98	<b>1.05</b>

### Max size availabilities

Custom size is our standard

Thickness	48"x116"	24 sqft
9/16"	•	
1 1/16"	•	◦
2 1/16"	•	◦
3 1/16"	•	◦
4 1/16"		◦

**NAF Core** No-Added-Formaldehyde core max sizes indicated **red dot**.



#### Edge details

All edges are resin hardened, unless otherwise specified.

- Available choices include:
- Square
  - Kerf/Square



#### Mounting

- Standard mountings:
- Z-Clips to Z-Bar
  - Z-Clip to DW Bracket
  - Concealed splines
  - Impaling clips/perimeter adhesive
  - Z-Bar to Z-Bar
  - Resin spots
  - Rotofast™ Snap-On Anchors
  - **Conwed Rotofast™ Z-Clip** (1 1/16" - 3 1/16" thickness only)



#### Finish

A wide variety of fabrics are available from all major brands, including:

**Carnegie DESIGNTEX**  
**maharam Knoll**  
**Guilford of Maine kvadrat**



#### Fire Rating

Conwed products meet or exceed ASTM E84 standards for smoke development and flame spread on a component level.



#### High Impact

This product has a strong layer of copolymer for high-abuse environments.



#### Shapes

—



#### Connecting

Products can be connected using Kerf edges with Spline.



#### Washable

Refer to the Maintenance & Cleaning Guide for more details.  
[conwed.com/cexp-maintenanceandcleaning](http://conwed.com/cexp-maintenanceandcleaning)

### Sustainability initiatives



For your LEED projects, our products can help you qualify for different points depending on the product you choose. Contact us to learn more detailed information. To view our certificate visit [conwed.com/cexp-LEED](http://conwed.com/cexp-LEED).

### Warranty

3 years. Refer to Warranty for more details.  
[conwed.com/cexp-warranty](http://conwed.com/cexp-warranty)



Disclaimer of liability: Technical information contained herein is furnished without charge or obligation and is given and accepted at recipient's sole risk. Conditions of use may vary and are beyond our control, and because of this Conwed makes no representation about, and is not responsible or liable for, the accuracy or reliability of data associated with particular uses of any product described herein.