



Wall Panel

Conwed Panels are reliable, all-purpose acoustic solutions. Capable of multiple levels of durability, highly-customizable finishes, and mounting options, this product is suitable for schools, auditoriums, theaters, offices, and libraries: anywhere noise control is needed.

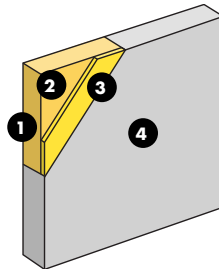
Fabric | IR ▶ Respond IR

Conwed's fabric-wrapped products, known as the *Respond Series*, are made with the leading textile manufacturers. With the addition of a durable and tackable IR layer hidden beneath the fabric, **Fabric | IR products can have increased impact-resistance.**

Core construction

Dimensionally-stable 6-7 PCF fiberglass board for acoustic performance. Layer of 1/8" impact-resistant (IR) material for added durability and tackability. Surface is completely adhered with a custom fabric, wrapping around to the back for fully-finished edges. Edges hardened for durability using resin.

1. Resin hardened edge
2. Fiberglass core
3. IR layer
4. Fabric Finish



Acoustic performance

The NRC of the products are determined from an average of sound absorption coefficients, obtained from tests conducted according to ASTM C423 procedures in an NVLAP accredited laboratory.

HZ →	125	250	500	1000	2000	4000	NRC ↓
5/8" thickness	0.04	0.22	0.60	0.97	1.07	1.04	0.70
7/8" thickness	0.07	0.34	0.80	1.04	1.08	1.06	0.80
1 1/8" thickness	0.08	0.46	0.95	1.07	1.06	1.01	0.90
1 5/8" thickness	0.16	0.72	1.09	1.12	1.05	1.04	1.00
2 1/8" thickness	0.27	0.90	1.11	1.06	1.04	1.10	1.05
3 1/8" thickness	—	—	—	—	—	—	—
4 1/8" thickness	—	—	—	—	—	—	—

Max size availabilities

Thickness	4'x10'	4'x12'	5'x10'	24 sqft
5/8"	•			
7/8"	•			
1 1/8"		◦	•	
1 5/8"	•			
2 1/8"		◦	•	
3 1/8"		◦	•	
4 1/8"				• ◦

NAF Core No-Added-Formaldehyde core max sizes indicated **red dot**.



Edge details	Mounting	Finish
<p>All edges are resin hardened, unless otherwise specified.</p> <p>Available choices include:</p> <ul style="list-style-type: none"> • Square • Radius • Bevel • Miter • Kerf/Square 	<p>Standard mountings:</p> <ul style="list-style-type: none"> • Z-Clips to Z-Bar • Concealed splines • Impaling clips/perimeter adhesive • Z-Bar to Z-Bar • Resin spots • Rotofast™ Snap-On Anchors • Conwed Rotofast™ Z-Clip (1 1/8" - 3 1/8" thickness only) 	<p>A wide variety of fabrics are available from all major brands, including:</p> <p>Carnegie DESIGNTEX</p> <p>maharam Knoll</p> <p>Guilford of Maine kvadrat</p>



Fire Rating

Conwed products meet or exceed ASTM E84 standards for smoke development and flame spread on a component level.



Impact Resistant

This product has an impact-resistant and tackable layer for protection in high-traffic areas.



Shapes

This product can be made into custom shapes for complex designs. Contact Customer Service for more info on how we can support your project.



Connecting

Products can be connected using Kerf edges with Spline.



Washable

Refer to the Maintenance & Cleaning Guide for more details.
conwed.com/cexp-maintenanceandcleaning

Sustainability initiatives



For your LEED projects, our products can help you qualify for different points depending on the product you choose. Contact us to learn more detailed information. To view our certificate visit conwed.com/cexp-LEED.

Warranty

3 years. Refer to Warranty for more details.
conwed.com/cexp-warranty



Disclaimer of liability: Technical information contained herein is furnished without charge or obligation and is given and accepted at recipient's sole risk. Conditions of use may vary and are beyond our control, and because of this Conwed makes no representation about, and is not responsible or liable for, the accuracy or reliability of data associated with particular uses of any product described herein.

Click for latest document version
conwed.com/datasheet-wallpanel-fabric-ir