



## Baffle

Conwed Baffles bring the performance you expect from a world-class acoustic solution to the growing trend of baffles. Combined with the Conwed Express Hanging System, any space can be perfectly fitted with highly customizable baffles.

## Fabric | IR

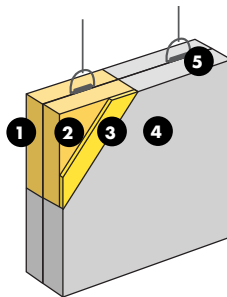
Respond Series

Conwed's fabric-wrapped products, known as the *Respond Series*, are made with the leading textile manufacturers. With the addition of a durable IR layer hidden beneath the fabric, **Fabric | IR products can have increased impact-resistance.**

### Core construction

Dimensionally-stable 6-7 PCF fiberglass boards adhered together for acoustic performance. Layer of 1/8" impact-resistant material for added durability. Edges hardened for durability using resin, with D-Rings preinstalled for connection points. Surface is completely adhered with a custom fabric, wrapping around to the back for fully-finished edges.

1. Resin hardened edge
2. Fiberglass core
3. IR layer
4. Fabric finish
5. D-Ring connection points



### Acoustic performance

The acoustic performance of the products are determined from an average of sound absorption coefficients, obtained from tests conducted according to ASTM C423 procedures in an NVLAP accredited laboratory.

HZ →	125	250	500	1000	2000	4000	Acoustic Performance ↓
2 1/2" thickness	—	—	—	—	—	—	—
3 1/2" thickness	—	—	—	—	—	—	—
4 1/2" thickness	—	—	—	—	—	—	—

### Max size availabilities

Custom size is our standard

Thickness	4'x10'	5'x10'
2 1/2"	✓	✓
3 1/2"		✓
4 1/2"	✓	✓

**NAF Core** Thicknesses also available in No-Added-Formaldehyde cores are indicated with **red checkmarks**.

**Minimum height of 5"**



#### Edge details

All edges are resin hardened, unless otherwise specified.

- Available choices include:
- Square
  - Half Bevel



#### Mounting

Preinstalled D-Rings for connection points.

Conwed Express Hanging System is an optional add-on.



#### Finish

A wide variety of fabrics are available from all major brands, including:

Carnegie **DESIGNTEX**  
**maharam Knoll**  
**Guilford of Maine**



#### Fire Rating

Conwed products meet or exceed ASTM E84 standards for smoke development and flame spread on a component level.



#### Impact Resistant

This product has an impact-resistant layer for protection in high-traffic areas.



#### Shapes

—



#### Washable

Refer to the Maintenance & Cleaning Guide for more details.  
[conwed.com/cexp-maintenanceandcleaning](http://conwed.com/cexp-maintenanceandcleaning)



#### Warranty

3 years. Refer to Warranty for more details.  
[conwed.com/cexp-warranty](http://conwed.com/cexp-warranty)

### Sustainability initiatives



**LEED**®

For your LEED projects, our products can help you qualify for different points depending on the product you choose. Contact us to learn more detailed information. To view our certificate visit [conwed.com/cexp-LEED](http://conwed.com/cexp-LEED).

Disclaimer of liability: Technical information contained herein is furnished without charge or obligation and is given and accepted at recipient's sole risk. Conditions of use may vary and are beyond our control, and because of this Conwed makes no representation about, and is not responsible or liable for, the accuracy or reliability of data associated with particular uses of any product described herein.