



Arborcoustic®

Direct-Attach Wall and Ceiling

I. Inspection

- **Freight Damage:** Inspect cartons for obvious damage before accepting and note on delivery ticket.
- **Concealed Damage:** Notify Conwed of any concealed damage within five (5) business days of receipt. Claims beyond five (5) days will be honored at the discretion of Conwed or the freight company.
- Do not install panels of unacceptable quality. Contact your sales representative immediately. Conwed will not be responsible for installation or removal costs of unacceptable panels.

II. Handling & Storage

- Clean white gloves must be used whenever handling ceiling panels.
- Store panels on a flat, dry, solid surface. Do not store on edge.
- Keep panels dry, clean and free from dust and damage.

III. Safety

Arborcoustic® by Conwed is made with wood fibers and a concrete binder. Sawing, sanding, or machining these products can produce wood dust and other airborne debris. Airborne dust can cause respiratory, eye, and skin irritation. Respirable wood dust is classified as carcinogens. Personal protective equipment includes safety glasses or goggles, and impervious gloves. Respiratory protection may be required when the product is being cut and handled. Job site environmental conditions must be evaluated in determining what type of respiratory protection is required. In all cases, cutting is to be performed in a well-ventilated area, and power tools must be equipped with a dust collection system.

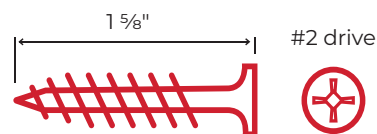
IV. Warranty

Failure to follow Conwed recommended installation instruction in effect at the time of installation may void the product system warranty.

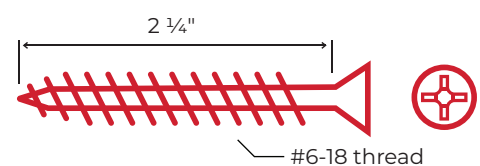
V. Recommended Hardware

For light steel framing (20 – 25 gauge) or for use with wood furring, sharp point screws are recommended. Sharp point screws are 1 5/8" long and are available in coordinating factory finish for white, grey, or natural panels. Conwed recommends a 5/8" penetration beyond the 1" panel into a suitable substrate to support the panel weight. If multiple layers of Arborcoustic® Panels are being installed, use screws long enough to penetrate BOTH layers, plus a minimum of 5/8". For 20- gauge and heavier structural steel decking or framing, use self-drilling (drill point) screws. For hollow block CMU, or masonry structures, use CMU screws. CMU screws are 2 1/4" long and are available in coordinating factory finish for white, grey, or natural panels. The fastener recommendations in this section are generally accepted, but should be evaluated on a case by case basis to ensure the appropriate fasteners are used. Conwed is not responsible for fastener selection.

Direct-attach sharp point screw #6 x 1 5/8"



CMU screw 1/4 dia. x 2 1/4"





Arborcoustic®

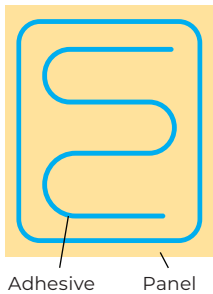
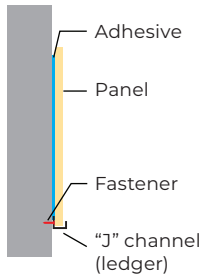
Direct-Attach Wall and Ceiling

VI. Wall Mount Applications

Panels can be mounted vertically or horizontally as desired

(Mounting A) Direct to substrate mount: Locate wall studs (if applicable) and place fasteners through the face of the panels, and into the wall studs (usually 16" O.C. with up to 24" O.C. being acceptable). Fasteners should be located a minimum of 1"-2" from the panel edge. Panel joints DO NOT need to intersect at stud locations, as panel ends may "float" up to 8" from fastener locations.

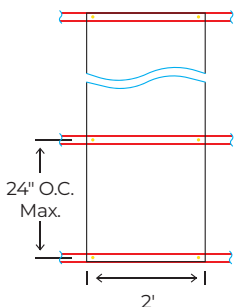
- Direct to substrate mount on walls where studs are not applicable (Concrete, CMU, etc.): Use appropriate fasteners, located a minimum of 1"-2" from the panel corners, and no more than 24" O.C. covering the field of the panels (see diagrams). For "High Impact Areas" such as gymnasiums, or areas where panels may be impacted, use a screw spacing of 16" O.C. Maximum.



(Mounting C-20/D-20) For installation where panels will have an air, or insulated space between:

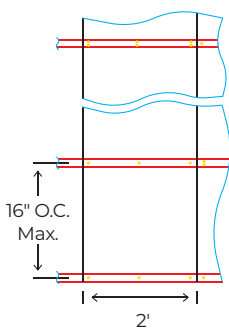
Install furring strips or "hat channel" as required to fully support panel ends (24" edges), then spaced 16" or 24" O.C. as required for normal or "high Impact" applications (see diagrams). The C-20 mounting method includes beveled edge wall panels laid on a 3/4" furring strip with 1", fiberglass batt insulation or mineral wool between the furring. This increases the acoustic absorption performance of the installed panels. Furring strips or "hat track" must be attached to the structure in a method that supports the full weight of the panels, usually fastened to studs, drywall grid, or other structural components behind a substrate like drywall. It is the responsibility of the contractor to locate these elements in either ceiling or wall applications.

Normal



Adhesive mount panels: Install a load bearing "J" channel at the desired panel base height, screwed into the wall studs/load bearing substrate as required to support the panel load. This acts as a ledger to support the panel weight. Apply adhesive around the perimeter of the panel, roughly 1" - 2" from the panel edge, and in a "zig zag" pattern covering the field of the panel back (see diagram). Ensure the adhesive bead is thick enough to offset any imperfections in the substrate surface for proper contact. Place the panel base into the "J" channel, and press firmly to adhere the panels in place. Temporary bracing or fasteners may be used to hold panels in place until the adhesive is fully cured. Perimeter adhesive can be used to supplement fasteners in any application as desired, and is recommended in "high impact" areas for walls under 10', and ceilings under 18' in height.

High impact



Field Cutting: Panels are easily cut using standard wood cutting tools. The short ends of panels will be square ends from the plant and will require a hand router with a 1/2" bevel bit to replicate the 1/2" bevel in the field, if required.

In high impact areas, furring for 1" Arborcoustic® panels on walls should not exceed 16" O.C. Place the furring perpendicular to the panels 2 foot width at the top and bottom of the panels, and no more than 24" O.C. For walls, space the screws 1" to 2" from each panel edge at each furring intersection. For ceilings, use 3 screws per furring.

In high impact areas, furring for 1" Arborcoustic® panels on walls should not exceed 16" O.C. For wall applications of 2' wide panels, place the furring perpendicular to the panel at 24" O.C. and at the top and bottom of the panels. Space the screws 1" to 2" from each panel edge at each furring intersection. On ceiling, use 3 screws per furring.

Wall applications

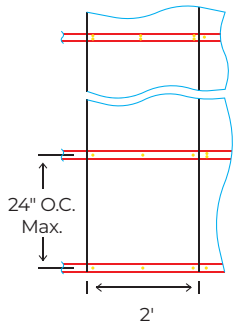


Arborcoustic®

Direct-Attach Wall and Ceiling

VII. Ceiling Mount Applications

Most ceiling mount applications require the installation of furring strips or other support to ensure panel end joints are properly supported.



Ceiling applications

(Mounting A) Direct to substrate mount: Locate ceiling joists (if applicable) and place fasteners through the face of the panels, and into the ceiling joists (usually 16" O.C. with up to 24" O.C. being acceptable). Fasteners should be located a minimum of 1"-2" from the panel edge. Panel ends (24" edges) can cantilever up to 3" beyond fasteners. For ceiling applications, install three screws per joist across the 24" width of the panel.

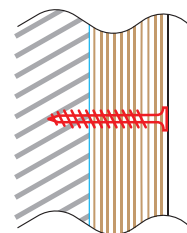
Ceilings where joists are not applicable (Concrete, etc.): Use appropriate fasteners, located a minimum of 1"-2" from the panel corners, with rows of screws no more than 24" O.C. covering the field of the panels (see diagrams). Install three screws per row across the 24" width of the panel (see diagram).

(Mounting C-20/D-20) Installation where panels will have an air, or insulated space between the panel and substrate: Install furring strips as required to fully support panel ends (24" edges), then spaced 24" O.C. as required for ceiling applications. Install three screws per furring strip across the 24" width of the panel (see diagram).

Arborcoustic® panels can be attached to suspended drywall grid using the same fastener guidelines as described for furred installation, above. Follow the grid manufacturers installation guidelines for grid materials and their support, in accordance with the load requirements to support the Arborcoustic® panels.

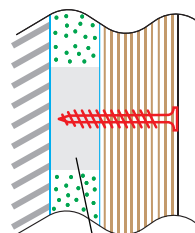
VIII. Typical mounting details for sound absorption

Mounting A



MTG. A – Laid directly against wall or ceiling surface

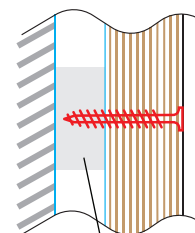
Mounting C-20



MTG. C-20 – Laid on 3/4" furring strips

1x furring strips 24" O.C. or equal

Mounting D-20

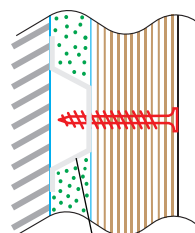


MTG. D-20 – Laid on 3/4" furring strips

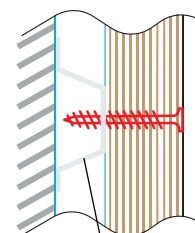
1x furring strips 24" O.C. or equal

Arborcoustic® wall or ceiling panel

1" fiberglass insulation



7/8" hat channel



7/8" hat channel